



FOR LEASE: New Retail on Highway 90A/S. Main at Texas Parkway, Missouri City

PROPERTY OVERVIEW

- AVAILABLE: 7750 SF – 8520 SF, all or part
- Drive-through capability
- Direct access to US 90A eastbound frontage road
- Texas Parkway/S. Gessner is approx. 1.3 miles west of Beltway 8
- Adjacent to Missouri City Middle and Elementary schools, near City Hall and other municipal properties and new HCC Southwest College
- Target delivery date late 2Q19/early 3Q19
- Call for pricing

DEMOGRAPHICS (ESRI 2018) 1-MILE 3-MILE 5-MILE

	1-MILE	3-MILE	5-MILE
POPULATION	6844	107,580	352,444
AVG. HH INCOME	\$73,994	\$75,567	\$77,792
EMPLOYEES	3334	36,582	124,037

TRAFFIC COUNT

(2016 TxDOT)	64,920 Cars per Day
--------------	---------------------

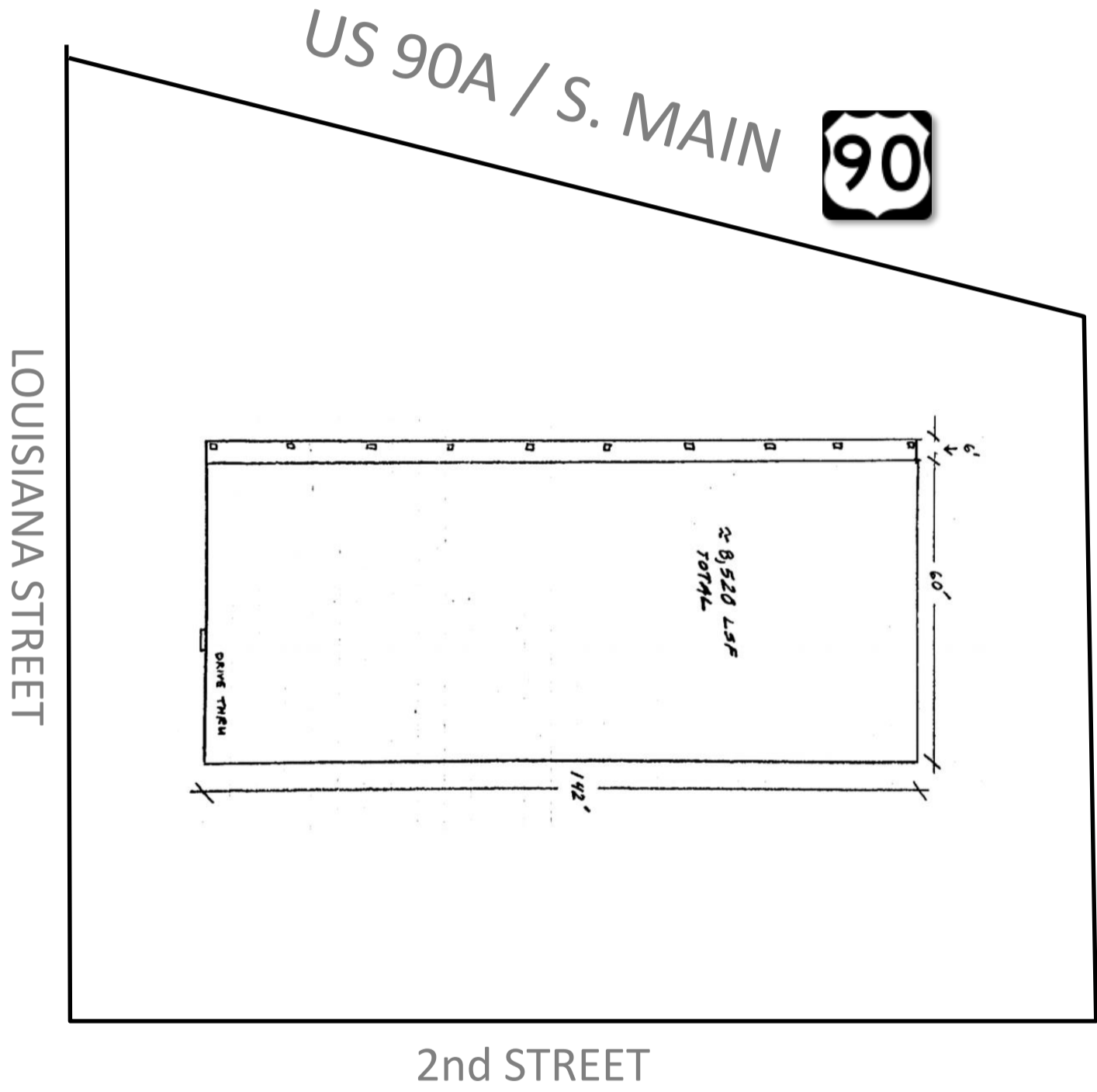


FOR INFORMATION, CONTACT:

FB
RE
 Kelly Ferguson, CCIM
 281.242.1261
kelly@fbre.net

Bud Friedman, CCIM
 281.242.1498
bud@fbre.net

The information contained herein has been obtained from sources deemed reliable; however, its accuracy is not guaranteed by Fort Bend Real Estate Corporation. The presentation of this property is subject to errors and omissions, and the property is subject to prior sale, change in price, or removal from market without notice.



FOR INFORMATION, CONTACT:

FB
RE
Kelly Ferguson, CCIM
281 242-1261
kelly@fbre.net

Bud Friedman, CCIM
281 242-1498
bud@fbre.net

FORT BEND REAL ESTATE CORPORATION
8410 Highway 90A, Ste 120, Sugar Land TX
www.fbre.net - 281.242.2200

The information contained herein has been obtained from sources deemed reliable; however, its accuracy is not guaranteed by Fort Bend Real Estate Corporation. The presentation of this property is subject to errors and omissions, and the property is subject to prior sale, change in price, or removal from market without notice.